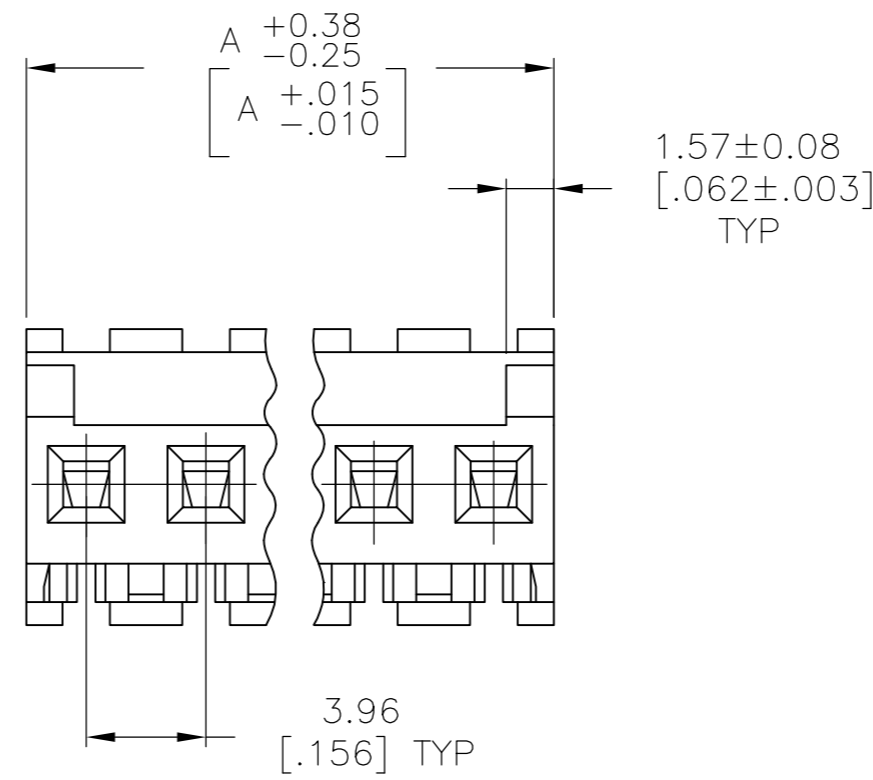
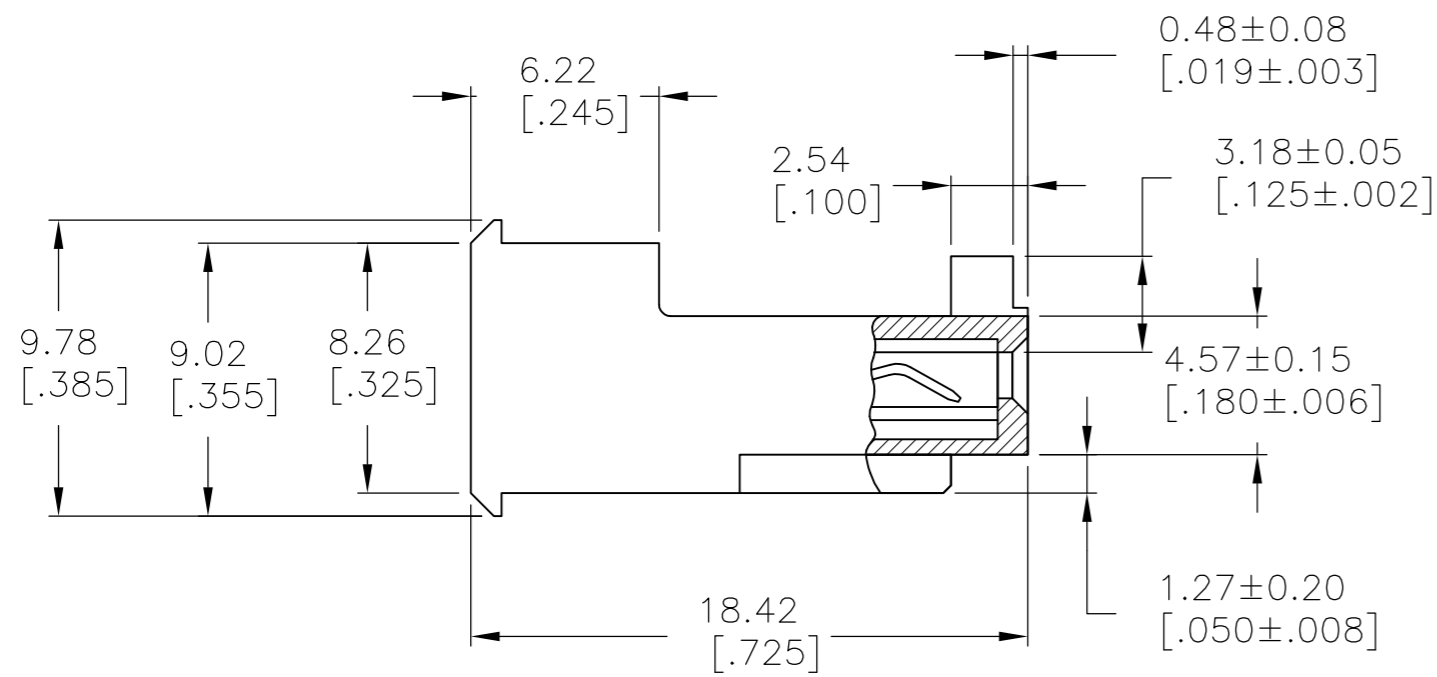
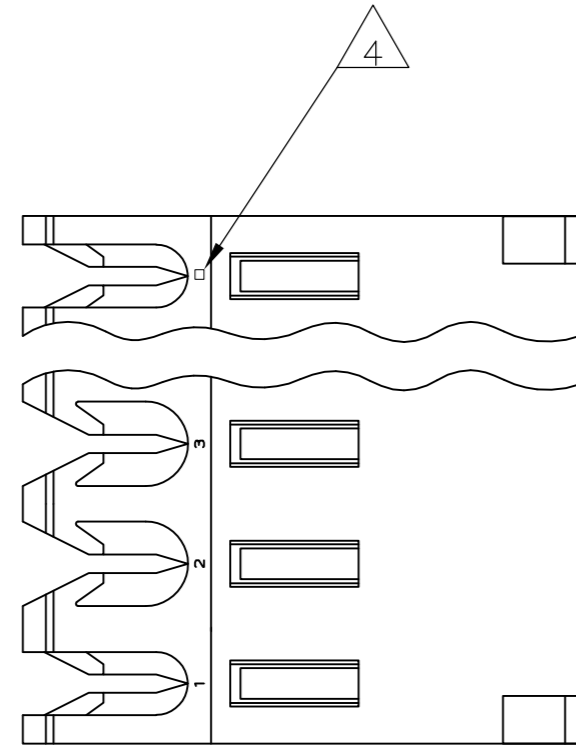


THIS DRAWING IS UNPUBLISHED. RELEASED FOR PUBLICATION
 © COPYRIGHT BY TYCO ELECTRONICS CORPORATION. ALL RIGHTS RESERVED.

| LOC | DIST | REVISIONS | | | | | |
|-----|------|-----------|-----|---------------|---------|-----|------|
| | | P | LTR | DESCRIPTION | DATE | DWN | APVD |
| CM | 54 | B | | ECO-07-012890 | 22JUN07 | KW | DB |



1 MATERIAL: CONNECTOR - NYLON UL94V-0 (BLACK).
 CONTACTS - 0.30[.012] THICK COPPER ALLOY
 BRIGHT TIN-LEAD 0.00203[.000080] MIN THICK FOR CONTACTS
 644572-2 THRU 1-644572-4
 MATTE WHISKER MITIGATED TIN 0.00203[.000080] MIN THICKNESS
 OVER NICKEL UNDERPLATE FOR 3-644572-2 THRU 4-644572-4

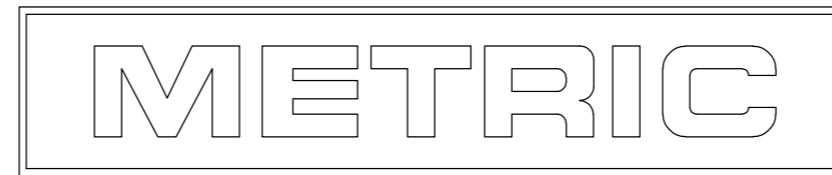
2. CONTACTS ACCEPT 22 AWG WIRE WITH 2.41[.095] MAX INSULATION DIAMETER.
 3. CONTACTS MUST ACCEPT 1.14±0.03 [.045±.001] SQUARE POST AND REMAIN LOCKED IN POSITION.

4 IDENTIFICATION NUMBER FOR LAST CIRCUIT MAY NOT APPEAR ON ALL ASSEMBLIES.

5. DIMENSIONS IN BRACKETS ARE IN INCHES.

6. HOUSING FEATURES ARE: FEED-THRU WITHOUT LOCKING RAMP AND WITH POLARIZING TAB.

| | | |
|---------------|----------------|------------|
| 47.55 [1.872] | 12 | 4-644572-2 |
| 43.59 [1.716] | 11 | 4-644572-1 |
| 39.62 [1.560] | 10 | 4-644572-0 |
| 35.66 [1.404] | 9 | 3-644572-9 |
| 31.70 [1.248] | 8 | 3-644572-8 |
| 27.74 [1.092] | 7 | 3-644572-7 |
| 23.77 [.936] | 6 | 3-644572-6 |
| 19.81 [.780] | 5 | 3-644572-5 |
| 15.85 [.624] | 4 | 3-644572-4 |
| 11.89 [.468] | 3 | 3-644572-3 |
| 7.92 [.312] | 2 | 3-644572-2 |
| 47.55 [1.872] | 12 | 1-644572-2 |
| 43.59 [1.716] | 11 | 1-644572-1 |
| 39.62 [1.560] | 10 | 1-644572-0 |
| 35.66 [1.404] | 9 | 644572-9 |
| 31.70 [1.248] | 8 | 644572-8 |
| 27.74 [1.092] | 7 | 644572-7 |
| 23.77 [.936] | 6 | 644572-6 |
| 19.81 [.780] | 5 | 644572-5 |
| 15.85 [.624] | 4 | 644572-4 |
| 11.89 [.468] | 3 | 644572-3 |
| 7.92 [.312] | 2 | 644572-2 |
| DIM A | NO OF CIRCUITS | PART NO |



| | | | | | |
|--|--|------------------|---|---|--|
| THIS DRAWING IS A CONTROLLED DOCUMENT. | | DWN | - | Tyco Electronics Corporation Harrisburg, Pa 17105-3608 | |
| DIMENSIONS: mm [INCHES] | | CHK | - | NAME | |
| TOLERANCES UNLESS OTHERWISE SPECIFIED: | | APVD | - | PRODUCT SPEC | |
| 0 PLC ± - | | 108-1051 | | APPLICATION SPEC | |
| 1 PLC ± - | | 114-1020 | | WEIGHT | |
| 2 PLC ± - | | A2 00779 | | SCALE | |
| 3 PLC ± 0.13 [.005] | | C=644572 | | SHEET 1 OF 1 | |
| 4 PLC ± - | | CUSTOMER DRAWING | | REV B | |
| ANGLES ± - | | SCALE 4:1 | | REV B | |
| FINISH | | SCALE 4:1 | | REV B | |